

## BACKGROUND

The Australian Roofing Tile Association (ARTA) is the peak body representing the concerns and interests of more than 90% of the roofing tile industry in Australia. Safety is a prioritised concern for our members.

ARTA is collaboratively working with roofing tile manufacturers and Work Health and Safety (WHS) officials to ensure that the roofing tile industry leads the way when it comes to safeguarding against the dangers of Multigrip Fasteners in construction.

## THE HAZARD

The Multigrip Fastener is a common timber framing anchor developed as a cost-effective connecting fixture for timber framed construction. This type of fastener is widely used in the industry with recent safety inspections confirming that 70 – 100 fasteners were exposed on the average roof construction project.

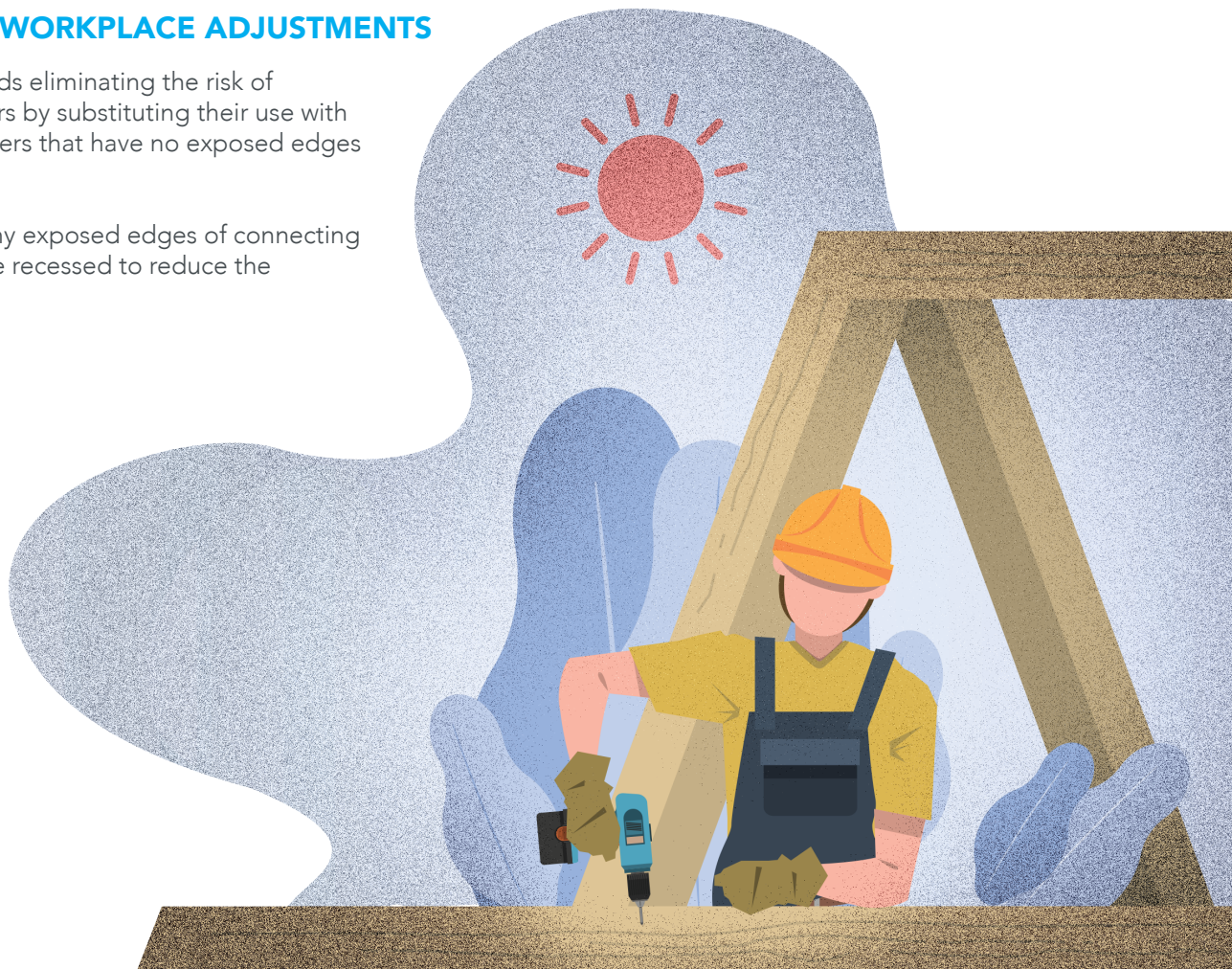
The multipurpose nature of multigrip fasteners reduces the need for a variety of connecting fixtures during construction, popularising its use. However, due to the number of exposed sharp edges, this fastener has become a prominent workplace safety hazard in roof construction. The roofing construction industry has seen a significant increase in serious incidents related to multigrip fasteners that have resulted in **severe lacerations to workers**.

The risk created by the exposed edges of multigrip fasteners is increased due to their tendency to exist at the intersection between a roof truss and wall frame. Navigating roof frames is hazardous and these intersections are high risk areas (prone to tripping and falling).

## SUGGESTED WORKPLACE ADJUSTMENTS

ARTA recommends eliminating the risk of multigrip fasteners by substituting their use with alternative fasteners that have no exposed edges when installed.

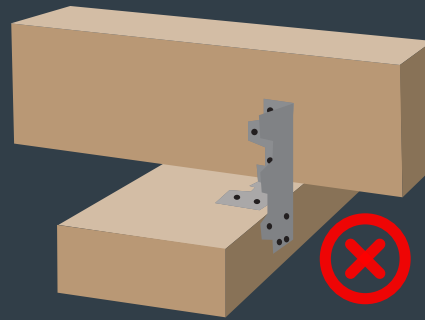
At a minimum, any exposed edges of connecting fixtures should be recessed to reduce the exposure risk.



## DANGER

### Multigrip Fasteners

- Multiple Exposed Sharp Edges
- Located in areas prone to tripping



## SOLUTION

### Use Alternative Fasteners

- Minimises sharp edge exposure
- Fasteners run parallel to truss

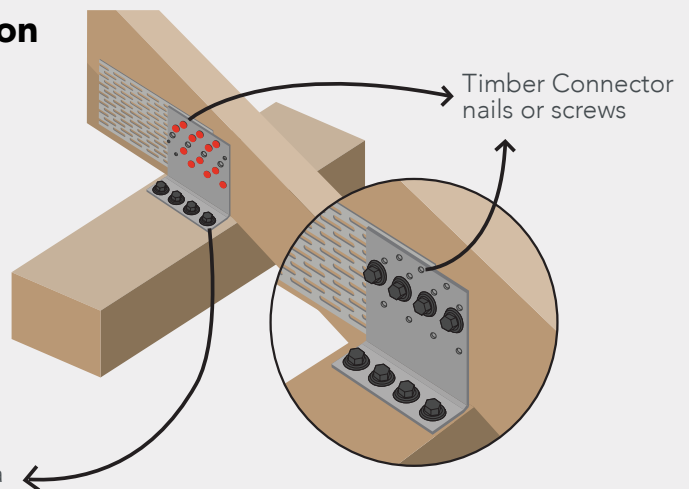
### Roof Truss Application

#### OPTION 1 Ideal Solution



Purlin Cleats provide a strong rigid connection eliminating all sharp edges and the associated hazard.

Screws for single wall plates or a screws for double wall plates.

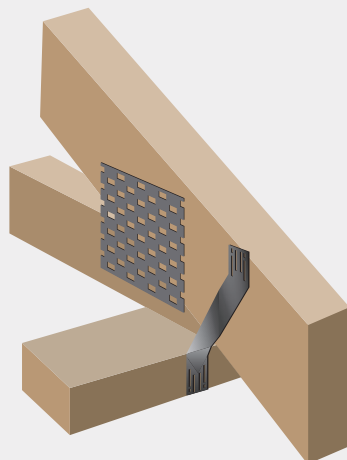


#### OPTION 2 Satisfactory Solution



Truss Ties are a quick and easy install solution for low tie-down requirement roofs that minimise exposed edges.

The prominence of the hazard is minimised.



#### OPTION 3 Least Preferred Solution



Nail fixing roof trusses using triple grip framing anchors reduces the prominence of exposed edges.

Risk of serious injury is minimised.

